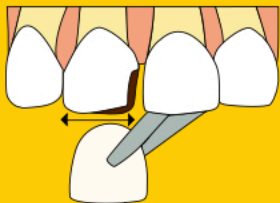


CROWN SELECTION

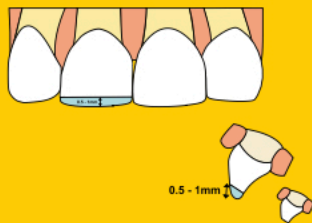
STEP 1



Choose appropriate size of crown using mesio-distal width

INCISAL PREPARATION

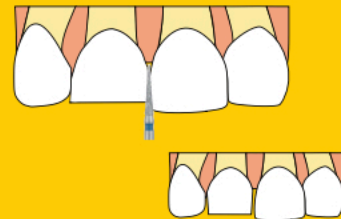
STEP 2



Maintain cuspal inclines and reduce the occlusal surface by 1.00mm – 1.5 mm, including the central groove.

PROXIMAL REDUCTION

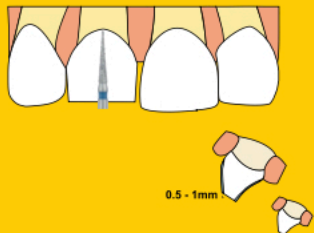
STEP 3



Proximal preparation – around 0.5 mm just enough to clear the contact area

BUCCAL LINGUAL

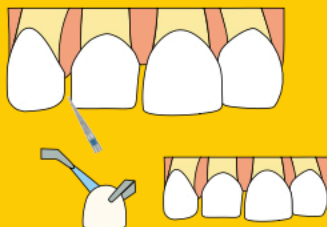
STEP 4



Buccal/ lingual reduction – confined to the occlusal third

ROUND ANGLE

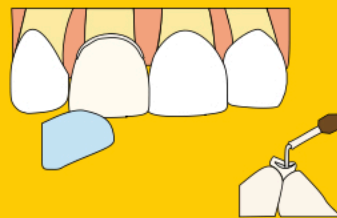
STEP 5



Rounding off all line angles

CEMENTATION

STEP 6



Seating the crown from lingual to buccal direction to achieve snug fit. Check occlusion and don't keep the occlusion high.